



**Birmingham**  
Business Park

# 6260

## BISHOPS COURT

### 6,159 SQ FT

Self-contained fully refurbished office building









# SPECIFICATION

The building benefits from the following:

## Internally

- Open plan floor plates
- New VRF comfort cooling system designed for occupancy at 1:8 sq m
- Mineral fibre suspended ceiling
- LED lighting
- Raised Access Floor
- EPC rating of D 83
- Male and Female WC's

## Externally

- Refreshed landscaping with new planting
- 33 car parking spaces (1:187 sq ft)

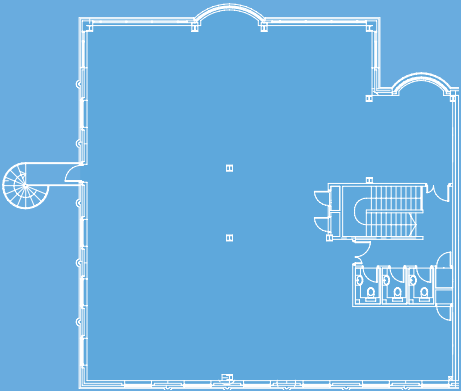
## The Park benefits from:

- 24 hr security team
- CCTV coverage and ANPR
- On-site management
- Bus services to and from Birmingham International, Coleshill and Sutton Coldfield

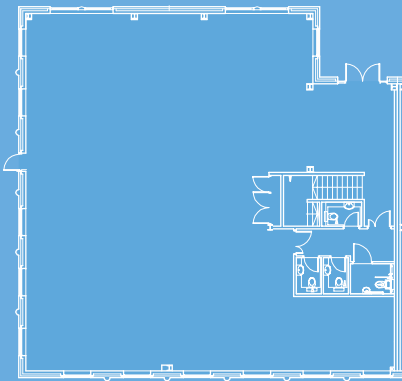
# ACCOMMODATION

IPMS3

	SQ FT	SQ M
GROUND FLOOR	3,053	283
FIRST FLOOR	3,106	288
TOTAL	6,159	571



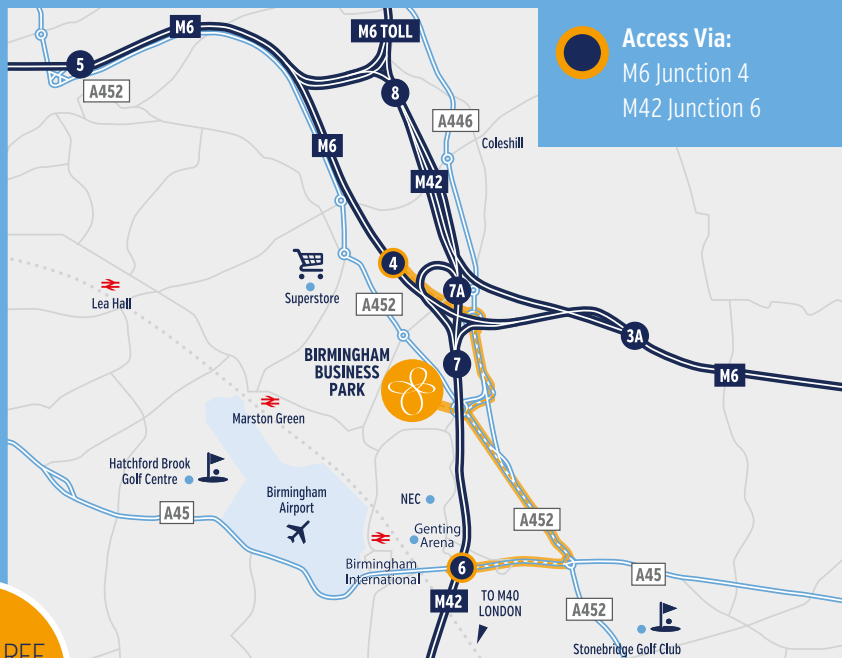
FIRST FLOOR



GROUND FLOOR

# IDEALLY LOCATED

**BIRMINGHAM BUSINESS PARK** IS CENTRALLY LOCATED CLOSE TO BOTH JUNCTION 6 OF THE M42 AND JUNCTION 4 OF THE M6. ACCORDINGLY THE PARK BENEFITS FROM MULTIPLE CONNECTIONS TO THE MIDLANDS MOTORWAY NETWORK AND EASY ACCESS TO BIRMINGHAM CITY CENTRE. BIRMINGHAM INTERNATIONAL RAILWAY STATION AND BIRMINGHAM AIRPORT ARE MINUTES FROM THE PARK OFFERING EXCELLENT NATIONAL AND INTERNATIONAL CONNECTIONS.



SAT NAV REF  
**B37 7YE**

## COMMUNICATIONS



### RAIL TIMES FROM BIRMINGHAM INTERNATIONAL RAILWAY STATION

Birmingham New Street	10 mins
London Euston	71 mins
Manchester Piccadilly	105 mins
Bristol Temple Meads	115 mins

Source: National Rail Enquiries



### ROAD DISTANCES (AND TIMES)

J4 M6	1.4 miles (3 mins)
J6 M42	3.0 miles (5 mins)
Solihull Town Centre	7.6 miles (12 mins)
Birmingham City Centre	12.3 miles (22 mins)

Source: A-Z Route Planner



## VIEWING STRICTLY THROUGH THE JOINT AGENTS



**Jonathan Carmalt**  
0121 643 6440  
jonathan.carmalt@eu.jll.com



**Adrian Griffith**  
0121 236 8236  
adrian.griffith@avisonyoung.com



**Malcolm Jones**  
0121 233 2330  
mjones@kwboffice.com

Owned by

**BLACKROCK®**

**parkpresentfuture.co.uk**

Misrepresentation Act: Whilst all the information in these particulars is believed to be correct, neither the agent nor their clients guarantee its accuracy nor is it intended to form any part of any contract. All areas quoted are approximate. Updated November 2019.